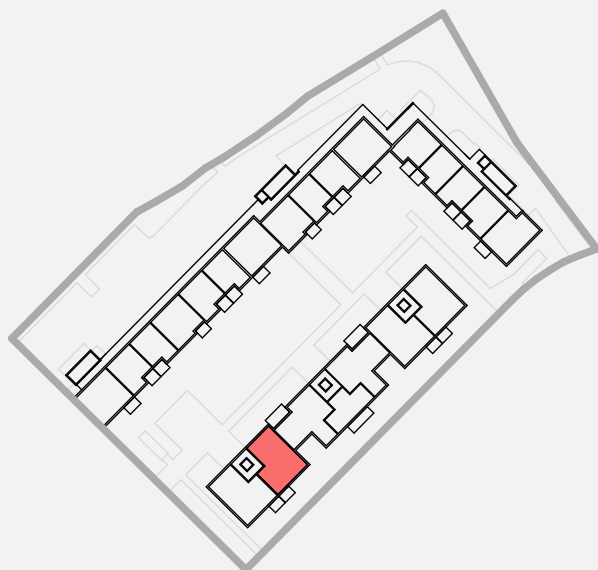


# WOHNEN AN DER KALTENMÜHLE

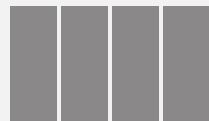
83022 Rosenheim - Happing

Haus 10 1.OG Whg. H10-1-1

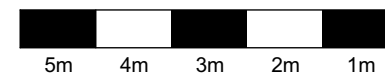
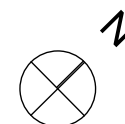
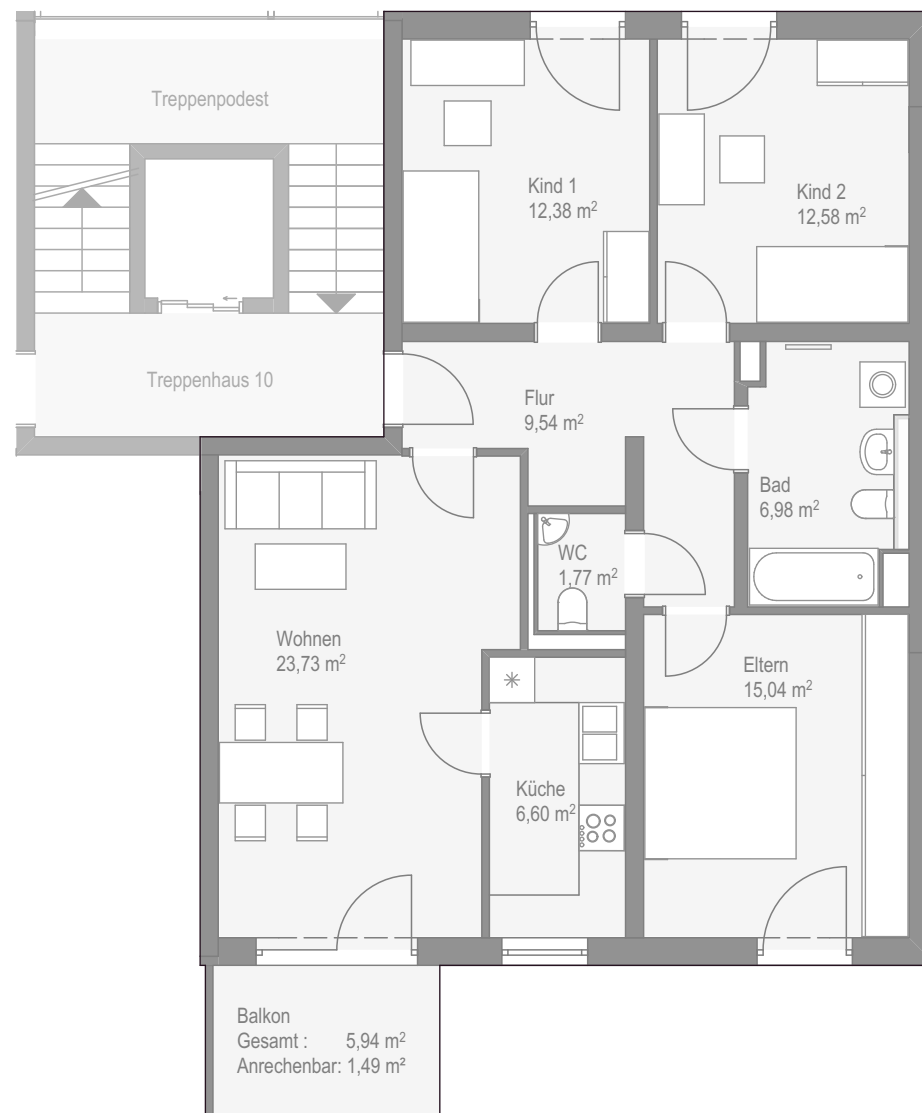


Fläche innen ca. 88,62 m<sup>2</sup>  
Balkone mit 25% ca. 1,49 m<sup>2</sup>  
Fläche gesamt ca. 90,11 m<sup>2</sup>

GRWS WOHNUNGSBAU-UND  
SANIERUNGSGESELLSCHAFT DER  
STADT ROSENHEIM MBH  
WEINSTRASSE 10 83022 ROSENHEIM



**GRWS**



M 1 : 100